

design and print by

**print**  
**mint**

01903 208408

For further information  
about the project or the

**valuing**  
health  
for all

**ACTION GUIDE**

please contact:

Alison Giraud-Saunders

Institute for Applied Health  
and Social Policy

Fifth Floor  
Waterloo Bridge Wing  
Franklin-Wilkins Building  
150 Stamford Street  
London SE1 9NN

Telephone 020 7848 3770

**Price £7.50** June 2003 ISBN 1-904488-00-5

© Institute for Applied Health and Social Policy, King's College London



Institute for applied health and social policy  
**LEARNING DISABILITY PROGRAMME**

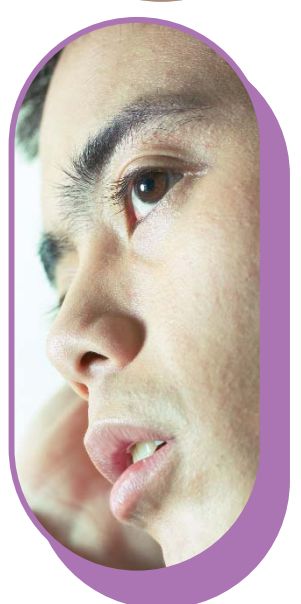
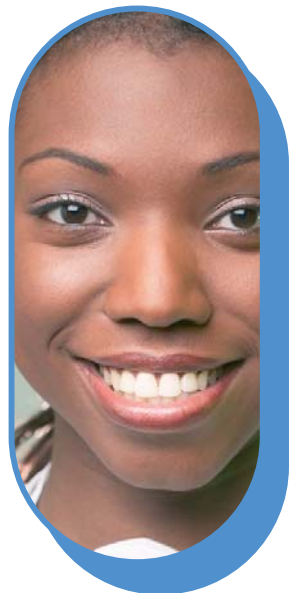
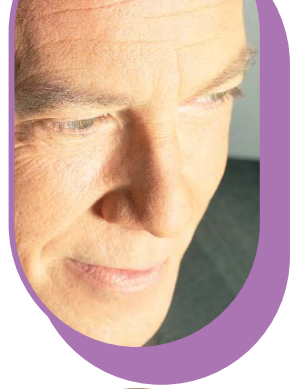
**KING'S**  
*College*  
**LONDON**

University of London

ACTION GUIDE

# valuing health for all

Primary Care Trusts  
and the  
Health of People with  
Learning Disabilities





## about the institute

IAHSP's overall aim is to promote the health, autonomy and social inclusion of disadvantaged people through applied research and service and organisational development. In the Learning Disability Programme we aim to support people who use services, families, staff and organisations to improve life chances for people with learning disabilities – working together to develop solutions that suit their communities. We do this through:

- **service and organisational development**
- **influencing national and local policy**
- **research**

We are particularly known for work on person centred planning, modernising day opportunities, community team development, health and health care, partnership development (including partnership with people with learning disabilities), and work to improve opportunities and support for young people. Our emphasis throughout is on supporting the development of local 'whole systems' capacity to put policy into practice, in order to achieve better opportunities for people with learning disabilities.



**Institute for applied health and social policy**  
**LEARNING DISABILITY PROGRAMME**

## project team and authors

**Alison Giraud-Saunders, Co-Director, Learning Disability Programme**

**Margaret Gregory, Senior Development Manager, Learning Disability Programme**

**Richard Poxton, Associate Consultant**

**Cathy Smith, Associate Consultant**

**David Towell, Senior Development Adviser, Organisational Development Programme**

For further information or discussion, contact:

**Alison Giraud-Saunders on [alisongs@compuserve.com](mailto:alisongs@compuserve.com) Tel. 020 7848 3770**

**Those named above have asserted their right to be identified as the authors of this book in accordance with the Copyright, Designs & Patents Act 1988.**

## acknowledgments

This project was made possible by the enthusiasm and determination of a wide range of people from the project sites: people with learning disabilities and their supporters, senior managers from PCTs, practitioners and staff from primary care and hospitals, and practitioners and managers from learning disability services. We also benefited from advice and support from Department of Health policy advisers, NatPaCT and the Valuing People Support Team. Thank you all!

The project was funded by a S.64 grant from the Department of Health and by contributions from the project sites.

The picture on page 18 is by Pen Mendonça, graphic facilitator.

## where to get copies of materials

A set of the materials produced by project sites will be available in the library of the British Institute of Learning Disabilities (BILD). Telephone **01562 723014**.

Some will also be available on the website of the Foundation for People with Learning Disabilities

[www.learningdisabilities.org.uk](http://www.learningdisabilities.org.uk)

©June 2003, Institute for Applied Health & Social Policy, King's College London

This publication may be copied for internal organisational use only.

Published by Institute for Applied Health & Social Policy, King's College London

A record of this book is available from the British Library

ISBN 1-904488-00-5

