



Produced by

Developmental Neurosciences
and Learning Disabilities Directorate
Mytton Oak
Royal Shrewsbury Hospital
SHREWSBURY
SY3 8XQ



Tel 01743 261181

DNLDD/075

Reviewed November 2008

With acknowledgment to
Change Picture Bank and The Picture Communication Symbols ©1981-2002



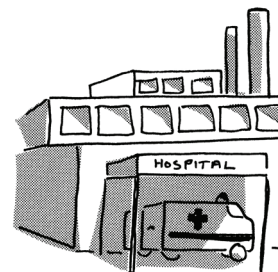
PALS

Patient Advice and Liaison Service

at the

Princess Royal Hospital
Telford

How we can help you



We are here to
help patients,
families and
carers when they
are in hospital.

We aim to



Give advice and support to patients.



Give information.



Listen to problems or comments .

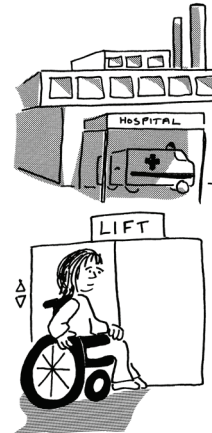


Help sort out problems.

To talk to us



On the telephone
01952 282888 or via
switchboard
01952 641222 ext 4382
Or free phone
0800 783 0057



PALS Office is in the
Main Entrance of the
hospital. You can ask the
Hospital Receptionist who
will tell you the way.



We will also visit you on
the Ward ask the staff
to call us on ext 4382