

# ALL MEANS ALL!

A NIGHT OF  
COMEDY & MUSIC

ROSE THEATRE KINGSTON  
MARCH 26TH 2010  
STARRING

POETS JOHN HEGLEY & MICHAEL ROSEN

COMEDIAN LIZ CARR

SINGER/SONGWRITER LEON ROSSELSON

JAZZ GREATS TIM WHITEHEAD &  
JULIAN JOSEPH

THE LONDON COMMUNITY GOSPEL CHOIR

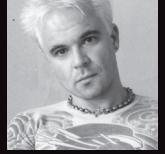
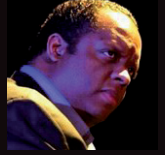
THE HEYA HOUSEBAND

COMPERED BY MIK SCARLET

PRESENTATION BY MICHELINE MASON

ALL PROFITS TO PARENTS FOR INCLUSION AND  
THE ALLIANCE FOR INCLUSIVE EDUCATION

DEDICATED TO DIANA SIMPSON



# ALL MEANS ALL!

A wonderful evening of music, poetry and laughter in aid of **Parents for Inclusion** and **The Alliance for Inclusive Education** starring

**THE "SUPREMELY FUNNY, TWISTED AND EDGY" COMEDIAN LIZ CARR**  
**POET, PERFORMER AND EDINBURGH FESTIVAL REGULAR JOHN HEGLEY**  
**POET, BROADCASTER AND FORMER CHILDREN'S LAUREATE MICHAEL ROSEN**  
**ACCLAIMED SINGER/SONGWRITER LEON ROSSELSON**

**JAZZ MASTER TIM WHITEHEAD ON SAX, JOINED BY THE SENSATIONAL**  
**JULIAN JOSEPH ON PIANO, OLLY HAYHURST ON DOUBLE BASS AND**  
**MARK BASSEY ON TROMBONE.**

**THE LONDON COMMUNITY GOSPEL CHOIR**

**THE HEYA HOUSE BAND, AN INCLUSIVE GROUP OF YOUNG SINGERS, MUSICIANS**  
**AND POETS.**

**COMPERED BY TV'S MIK SCARLET, PRESENTER OF BBC2'S DISABILITY NEWS**  
**SHOW 'FROM THE EDGE' AND CHANNEL 4'S 'BEAT THAT'**

**PLUS A SPEECH AND POEM READ BY MICHELINE MASON DEDICATED**  
**SUPPORTER OF PI AND ALLFIE**

**FRIDAY MARCH 26TH 2010 7.30PM**

**TICKETS £15, CONCESSIONS £10, PIT CUSHIONS £8**

**BOX OFFICE 0871 230 1552**

**ROSE THEATRE, 24-26 HIGH STREET, KINGSTON, KT1 1HL SURREY**

**WWW.ROSETHEATREKINGSTON.ORG**

## **Parents for Inclusion and the Alliance for Inclusive Education**

are national charities based at 336 Brixton Road, London SW9 7AA.

The main aim of our organisations is to become effective allies to young people who are in danger of exclusion, from ordinary schools, from play, even within the family. We train professionals, help empower parents, and give the young people a voice. They are grass-roots organisations run by disabled people and parents themselves, and as such are largely unfunded. *Micheline Mason*

**[www.parentsforinclusion.org](http://www.parentsforinclusion.org)**

020 7738 3888 - office phone 0800 652 3145 - freephone helpline

Charity no: 1070675 Ltd company no: 03593150 Registered in England

**[www.allfie.org.uk](http://www.allfie.org.uk)** - phone 020 7737 6030