



The National Autistic Society's Professional Conference

Tuesday 5 & Wednesday 6 March 2013
Harrogate International Centre

Celebrating creativity and innovation

This two-day conference will be a unique opportunity for senior professionals to discuss best practice and share learning.

Key speakers include:

- > **Rudy Simone**, Writer, Singer and Comedienne
- > **Dean Beadle**, Public Speaker and Writer
- > **Dave Hewett**, Intensive Interaction Institute
- > **Dr Andy McDonnell**, Studio III Clinical Services
- > **Professor Patricia Howlin**, King's College London and University of Sydney
- > **Professor Neil Humphrey**, University of Manchester
- > **Dr Peter Vermeulen**, Autisme Centraal
- > **Gareth D Morewood**, Priestnall School
- > **Charlie Henry**, HMI for Ofsted

Don't
miss the
Early Booking
rate – ends
23 November
2012!

Endorsed by:



Sponsor:



Headline sponsor:



Accept difference. Not indifference.

The National Autistic Society's Professional Conference

5-6 March 2013 – Harrogate International Centre

Welcome

I'm delighted to announce the return of **The National Autistic Society's Professional Conference.**

With yet another year of cutbacks in funding and resources, we wanted to focus on the positive work being done to improve the lives of people with autism. That's why the theme of this year's conference is Celebrating creativity and innovation.

Our Editorial Board has developed an outstanding programme which draws together examples of best practice by professionals who are working hard to make a difference.

Keynote sessions given by top international speakers will present an overview of the changing autism environment, and a series of expert seminars will provide you with practical strategies to implement with your colleagues. Personal perspectives will be shared by world-famous author Rudy Simone and renowned autism speaker Dean Beadle.

An exciting new development this year is the introduction of our inaugural Autism Professionals Awards. They seek to acknowledge the outstanding contributions and achievements of individuals, teams and organisations who have demonstrated excellence, dedication and commitment to improving the lives of people with autism. You can read more about the Awards over the page.

By celebrating the creative and innovative work being done across the UK and worldwide, we can gain the inspiration and motivation to keep multiplying our efforts and ensure that people with autism get to live the life they choose.



Carol Povey
Director of the Centre for Autism at
The National Autistic Society and Chair of
Professional Conference editorial board

Don't delay - last year's event was our most popular yet, so book now to avoid disappointment.

Register now at:

www.autism.org.uk/conferences/professional2013

Editorial board



Dr Julie Beadle-Brown

Reader in Intellectual and Developmental Disability at the Tizard Centre, **University of Kent** and Professor in Disability Studies, **La Trobe University, Melbourne, Australia**



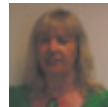
Sandy Bering

Lead Commissioner / Consultant – Health and Well Being, **NHS Greater Manchester**



Virginia Bovell

Parent of a 17 year old with autism



Dr Juli Crocombe

Consultant in Developmental Neuroscience and Learning Disability
St George's Hospital



Dr Judith Gould

Director
The NAS Lorna Wing Centre for Autism



Dr Glenys Jones

Lecturer and Researcher
Autism Centre for Education and Research University of Birmingham



Steve McGuinness

NAS Trustee, Councillor and Autism Consultant



Richard Mills

Research Director
Research Autism



Hugh Morgan

CEO Autism Cymru & Expert Advisor for ASD to the Welsh Government
Autism Cymru



Charlene Tait

Director of Development
Scottish Autism



Jane Vaughan

Director of Education
The National Autistic Society

"Fast paced and full of new, well researched ideas presented by excellent, well educated speakers."

About the organisers

The National Autistic Society is the leading UK charity for people with autism (including Asperger syndrome), their families and the professionals who work with them. We provide information, support and pioneering services, and campaign for a better world for people with autism.

Evening debate and drinks reception

At the end of day one of the conference, there will be a networking drinks reception allowing you to maximize networking opportunities with colleagues and peers. The drinks reception is kindly sponsored by Axcis Education.

Breakfast seminars

On day two of the conference, you can attend one of our breakfast seminars. These facilitated networking and discussion forums will give delegates a fantastic opportunity to debate current issues facing the autism community.

Places at these seminars are limited, so don't forget to pre-register to secure your place.

About our Headline Sponsor



Axcis Education is the foremost supplier of quality SEN teaching and support staff in the UK. We believe in our duty of care to the young people with SEND whose education we support. As part of our commitment, Axcis is delighted to continue sponsoring the ground-breaking work of the NAS.

"An inspiring conference with passionate, knowledgeable speakers dedicated to striving for better outcomes for people with autism."

"A rare opportunity to learn what you were not looking for."

"I found the whole event inspiring and very professional."

Accommodation

We have reserved a limited number of rooms at discounted rates. For more details, please visit our website:

www.autism.org.uk/conferences/professional2013

Please note that fees do not include accommodation and the NAS is not responsible for organising this.

About the venue

Harrogate International Centre

Located in the heart of the cosmopolitan town of Harrogate, Harrogate International Centre (HIC) is one of the most impressively integrated conference, exhibition and events venues in Europe. Harrogate is easily accessible by rail, car and air. For more details on how to get there, please visit their website:

www.harrogateinternationalcentre.co.uk



Who should attend

- **Education professionals** from mainstream schools, special schools and Local Authorities
- **Commissioners, directors** and **senior autism leads** with responsibility for local authority autism service provision
- **Directors** and **senior managers** of adult services
- **Clinicians** across the professional field, including psychiatrists, psychologists, speech and language therapists, occupational therapists and GPs.

Exhibiting opportunities

In the current tough economic climate, this conference will give you a cost-effective way to promote your products and services and enhance your company's profile amongst your target audience.

To find out more about our exhibition packages, call Kate Laird on 020 7923 5734 or visit

www.autism.org.uk/conferences/professional2013.

Attend to:

- hear **keynote presentations** from **expert speakers** discussing the latest developments in the field
- choose the seminar stream most **relevant to you**
- learn **practical strategies** to implement with your colleagues
- **network** with professional colleagues to **benchmark your performance** and learn from your peers.

"A really useful and informative conference with a wide variety of people from different professions and backgrounds."

Register today to get your early booking discount.

Special early booking rates apply before 23 November 2012.

Conference Programme

Day One – Tuesday 5 March 2013

Plenary sessions

08.00 Registration and refreshments

09.30 **Welcome by the Chairs**

Jean Wilson, Managing Director, Axcis Education Recruitment and

Josh Muggleton, Student and Autism Speaker / Writer

09.40 **Welcome Address**

Mark Lever, Chief Executive, The National Autistic Society

10.00 **KEYNOTE ADDRESS**

Fully formed - creativity and fluid intelligence on the autism spectrum

Rudy Simone, Writer, Singer and Comedienne

11.00 Refreshment break

11.30 **Understanding autism from within: autistic thinking**

Dr Peter Vermeulen, Lecturer and Consultant, Autisme Centraal, Ghent, Belgium

12.10 **Outcomes for people with autism**

Professor Patricia Howlin, Emeritus Professor of Clinical Child Psychology, King's College London and Professor of Developmental Disorders, University of Sydney

12.50 Lunch

12.50 **Drum workshop with Biant Singh Suwali**

Kindly sponsored by **Options Group**



Stream sessions

Choose your individual sessions from the four streams listed below

	A – Education	B – Adults	C – Clinical	D – Supporting families
1	<p>Community based education and support</p> <p>Brenda Mullen Director of Children's and Young People's Services, MacIntyre Education</p>	<p>Providing a socially inclusive advice service for people with autism – the Bristol Autism Advice Service</p> <p>Ian Ensum Consultant Psychologist, Bristol Asperger Syndrome Service and</p> <p>Matthew Terise Training and Liaison Worker, Bristol Asperger Syndrome Service</p>	<p>Overlap is the rule rather than the exception - understanding the evidence of specific learning difficulties</p> <p>Professor Amanda Kirkby Medical Director, Dyscovery Centre</p>	<p>Technology-based education, intervention and support for people with autism and their families</p> <p>Dr Sue Fletcher-Watson Nuffield Research Fellow, Moray House School of Education, University of Edinburgh</p>
14:40	Transition between seminars			
2	<p>Autism and the internet: history, culture and safeguarding</p> <p>Brendan Walsh Educational ICT Advisor, The National Autistic Society</p>	<p>Autism and ageing - planning for the future: research, welfare rights and financial planning</p> <p>Richard Mills Research Director, Research Autism and</p> <p>Jane Owen-Pam Welfare Rights Co-ordinator, The National Autistic Society and Speaker from AWD Chase de Vere</p>	<p>Cognitive behavioural therapy for people with autism</p> <p>Dr Ann Ozsvadjian Principal Clinical Child Psychologist, Newcomen Centre, Guy's Hospital</p>	<p>Play - let's enjoy some! A practical and joyful approach for very young children with ASD and those that need to enjoy the early play stages in the long-term</p> <p>Gina Davies Specialist Speech and Language Therapist, Attention Autism</p>
15:30	Refreshment break			

Plenary sessions

16:00 **Specialist secure services for people with autism: moving from vision to implementation**

Dr Helen Pearce, Consultant in Developmental Psychiatry, Tees Esk and Wear Valleys NHS Foundation Trust

16.40 **Changing organisational culture**

Dr Andy McDonnell, Director, Studio III Clinical Services

17.20 **Closing remarks**

18.30 **Networking drinks reception kindly sponsored by Axcis Education Recruitment**

AXCIS Education Recruitment



19.30 **Awards Dinner**

See overleaf for more information



Day Two – Wednesday 6 March 2013

08:45	BREAKFAST SEMINAR 1	BREAKFAST SEMINAR 3
	Post-Winterbourne View: a lesson learnt or a lesson ignored? Vivien Cooper , The Challenging Behaviour Foundation and Beverley Dawkins OBE , Mencap National Centre	Imagining Autism: exploring the autistic imagination and the impact of drama-based techniques Dr Nicola Shaughnessy , Dr Melissa Trimmingham and Dr Julie Beadle-Brown , University of Kent
	BREAKFAST SEMINAR 2	BREAKFAST SEMINAR 4
	State of the nations – a panel discussion looking at autism legislation across all 4 nations Shirelle Stewart , The National Autistic Society Hugh Morgan , Autism Cymru John Phillipson , North East Autism Society Charlene Tait , Scottish Autism	Working together to deliver a local offer Janet Leach , Head of Service, Joint Service for Disabled Children, Enfield Council Sophie Castell , Independent Consultant, Sophie Castell Ltd

Plenary sessions

- 09.50 **Welcome by the Chairs**
Lynn Faber, Executive Manager, Axcis Education Recruitment
- 10.00 **Intensive interaction and autism**
Dave Hewett, Trainer and Consultant; Director, Intensive Interaction Institute
- 10.40 **Autism unpacked: how my brother's autism has changed over 50 years, and how the definition of autism as a whole has changed over his lifetime**
Saskia Baron, Sibling and TV Producer, 'The Autism Puzzle'

- 11.20 Refreshment break
- 11.50 **Nidotherapy: making the environment do the therapeutic work**
Professor Peter Tyrer, Professor of Community Psychiatry, Centre for Mental Health, Department of Medicine, Imperial College London
- 12.30 Lunch
- 12.30 **Drum workshop with Biant Singh Suwali**
Kindly sponsored by **Options Group**



Stream sessions Choose your individual sessions from the four streams listed below

	A – Education	B – Adults	C – Clinical	D – Supporting families
13:30	Achieving success for pupils with an outstanding Ofsted judgement – what are we looking for? Charlie Henry, HMI Principal Officer for Special Educational Needs and Disability, Ofsted	Exploring the extent and impact of person-centred support for adults with autism Julie Beadle-Brown Senior Lecturer in Learning Disabilities, University of Kent	The NICE guidance for adults with autism and DSM-5: what difference will they make? Dr Judith Gould Director, The NAS Lorna Wing Centre and Richard Mills Research Director, Research Autism	Mindfulness based therapy Dr Annalies Spek Clinical Psychologist, Adult Autism Center Eindhoven and Michael McCreadie Consultant Clinical Director, Studio III Clinical Systems
14:10	Transition between seminars			
14:20	Mainstreaming autism: from research to practice Professor Neil Humphrey Professor of Psychology of Education, The University of Manchester and Gareth D Morewood Director of Curriculum Support, Priestnall School	21st Century inclusion: using IT to engage and communicate Dr Dinah Murray Director, Outreach IT and Katie Nurse Support Worker, Surrey and Borders Partnership NHS Trust	What do epilepsy and autism have in common? Professor Deb K Pal Professor of Paediatric Epilepsy, King's Health Partners	Working with children at the very earliest stages of communication: what are our goals and how can we achieve them? Dr Vicky Slonims Clinical Lead Speech and Language Therapist (Hon Senior Lecturer, KCL), Children's Neurosciences Centre, (Newcomen Centre) Evelina Children's Hospital
15:00	Refreshment break			

Plenary sessions

- 15:20 **Aspergers, education and me**
Dean Beadle, Public Speaker and Writer
- 16.00 **Closing remarks**
- 16.15 Conference ends

Don't delay - last year's event was our most popular yet, so book now to avoid disappointment.

Register now at:
www.autism.org.uk/conferences/professional2013



2013
**AUTISM
PROFESSIONALS
AWARDS**

Tuesday 5 March 2013, Harrogate

*Celebrating creativity
and innovation*

The National Autistic Society is proud to announce the launch of the inaugural **Autism Professionals Awards 2013**.

These Awards have been created to recognise and reward services and professionals who are leading the way in innovative autism practice and making a real difference to the lives of people with autism in the UK.

The Awards will be presented at a prestigious Awards Dinner held on the first night of **The National Autistic Society's Professional Conference 2013**, where the winners will be announced and presented with their Award.

Entries close
**16 November
2012**

THE AWARDS

Six Awards divided into two categories to cover the whole range of disciplines.

Individual Awards:

celebrating excellent practice carried out by UK-based individual professionals in the field of autism.



The Axcis Award for Individual Achievement by an Education Professional

AXCIS Education Recruitment



The Individual Lifetime Achievement Award



Award for Inspirational Education Provision



Award for Outstanding Adult Services



Award for Clinical Excellence



Award for Innovative Family Support

For more information on entering or attending the evening Awards visit

www.autismprofessionalsawards.org.uk

Why enter?

The Autism Professionals Awards are the only cross-discipline Awards to recognise and reward professionals who are dedicated and committed to improving the lives of people with autism in the UK.

Judged by a panel of leading experts in the field of autism from a variety of professional backgrounds across the UK, the winners will benefit from unparalleled recognition behind the outstanding achievements.

Entering yourself or your team for an Award is a great way to gain national recognition for the excellent work you have been doing.

Nominating someone else for an Award

If you know of a professional or team of professionals that you think are deserving of an Award, why not nominate them? It's easy to do and doesn't cost anything.

Visit www.autismprofessionalsawards.org.uk to find out more.

Attend the Awards

Join and attend the Awards by visiting www.autismprofessionalsawards.org.uk

Sponsor an Award

Sponsorship of the Awards provides a unique opportunity to promote your message to an audience of key autism professionals.

- **Deliver your message** direct to a cross-disciplinary audience whose specialisms match those of your organisation.
- **Associate your brand** with the UK's leading autism charity.

For more information on sponsoring an Award, contact **Steve Parrott** – T: **01202 788509**
E: steve@autismprofessionalsawards.org.uk

Or contact **Juliet Gamblen** on
T: **020 7923 5768**
E: juliet.gamblen@nas.org.uk

Our esteemed Judging Panel



Professor Gillian Baird

Consultant Paediatrician
Guy's and St Thomas' NHS Foundation Trust
and Professor of Paediatric DNeurodisability,
King's College London



Dr Julie Beadle-Brown

Reader in Intellectual and Developmental
Disability at the Tizard Centre, University of Kent
and Professor in Disability Studies at
La Trobe University, Melbourne, Australia



Dean Beadle

Journalist and Autism Speaker



Dr Glenys Jones

Lecturer and Researcher, Autism Centre
for Education and Research University
of Birmingham



Bob Lowndes

Chief Executive, Wessex Autistic Society
and Chairman of the AET



Adam Feinstein

Writer, Autism Researcher, Editor of *Awares*
and *Looking Up* magazine



John Phillipson

Chief Executive, North East Autism Society



Robyn Steward

Trainer, Speaker, Mentor and Autism Consultant



Mrs Charlene Tait

Director of Development, Scottish Autism



Dr Rona Tutt OBE

Independent Consultant

Enter
now



The National Autistic Society's Professional Conference

Tuesday 5 & Wednesday 6 March 2013
Harrogate International Centre

Brochure code: WEB

Rates	Early booking rate Book by 23 November 2012	Standard rate
Delegate rate	<input type="checkbox"/> £375 + VAT (£450)	<input type="checkbox"/> £395 + VAT (£474)
NAS Members rate	<input type="checkbox"/> £295 + VAT (£354)	<input type="checkbox"/> £345 + VAT (£414)
One day rate	<input type="checkbox"/> £245 + VAT (£294) I would like to attend Day 1 <input type="checkbox"/> or Day 2 <input type="checkbox"/>	
Exhibitor rate	<input type="checkbox"/> £1,295 + VAT (£1,554)	For full details of what the exhibitor rate includes, please visit: www.autism.org.uk/conferences/professional2013
<input type="checkbox"/> I would like to attend the Award Dinner at an additional cost of £30 + VAT (£36)		

Please confirm which seminars you will be attending at the conference

Education
 Adults
 Clinical
 Supporting families

Please confirm which breakfast seminar you will be attending on Day 2

Seminar 1
 Seminar 2
 Seminar 3
 Seminar 4

To make a booking:

Online

www.autism.org.uk/conferences/professional2013

Email conference@nas.org.uk

Tel 0115 911 3367

Fax 0115 911 3362

Post NAS Conference and Events
6th Floor, Castle Heights
72 Maid Marian Way,
Nottingham, NG1 6BJ

How did you hear about this conference?

Please write here

NAS Internal

T1 Code:

T2 Code:

T3 Code:

Nominal Code:

Delegate details

Title	First name	Surname
Job title	Tel	
Organisation	Fax	
Email		
Keeping in touch with you via email will help to keep our costs down. Please tick this box if you are happy to receive emails from us <input type="checkbox"/>		
Address		
Town	County	
Postcode	Country	

The National Autistic Society would like to update you from time to time in order to inform you about our work.

If you **do not** want to receive any mailings from The National Autistic Society, **please tick this box**

NAS membership number:

Any special requirements

i.e. Access/Dietary/Support/Other?

Terms & conditions

Conference fees

All prices include entrance to the conference and seminar sessions, lunch, refreshments and comprehensive delegate documentation. Fees do not include delegate accommodation and travel and The National Autistic Society (NAS) is not responsible for arranging these.

Payment

Payment must be received before the conference date. If payment is not received by this time, delegates will be required to guarantee payment by credit card on the day of the conference. Cheques should be in pounds sterling and should be made payable to "The National Autistic Society".

Cancellations and Refunds

Delegates who wish to cancel their places must do so in writing. If notice of cancellation is received at least 21 days prior to the event, the NAS will refund the full registration fee less £50 administration charge. If notice of cancellation is not received within 21 days prior to the conference, then we regret that no refund can be made.

Substitutions can be made without charge up to 3 days prior to the event. In the event that the NAS has to cancel the event, delegates will be given as much notice as possible and given a full refund (if paid in full) or a credit note (where payment is not yet made). We regret that we will be unable to compensate delegates for any travel or accommodation costs incurred.

Overseas Delegates

EU countries: Delegates attending from EU countries are exempt from paying VAT only when their organisation is VAT registered within their own country. Confirmation of the VAT registration number is required at the time of booking. Non-EU countries: VAT will be charged on the invoice but you are able to claim back the VAT charge.

Booking contact

If you are booking on behalf of someone else, please provide your contact details here.

Title	First name	Surname
Job title	Tel	
Email		

Payment details

CHEQUE

Please find enclosed a cheque for £

Please make all cheques payable to The National Autistic Society

INVOICE Please complete all details below

Invoice for the attention of	
PO Number (if applicable)	
Address	
Postcode	Tel No
Email	

CREDIT CARD

Card type	Card number	
Start date	Expiry date	Security code (3 digits on reverse)
Name on card		
Signature		