

QUESTIONNAIRE

It would help us if you could give as much detail as possible.



1.

Name:

Job Title (if applicable):

Address:

Telephone:

e-mail:

How old are you?

**2. Please describe yourself in your own words.
(i.e. 'I am Afro-Caribbean and have motor neuron disease' or 'I am a Welsh carer of a person with Parkinsons disease',)**



Section Two

We want to know how important you think these statements are. Please give one tick ✓ for if they are a bit important, or up to five ticks ✓✓✓✓✓ if you think they are very important. If you do not think they are important at all then don't give them a tick.

A. CHOICES AND GETTING THE MOST OUT OF LIFE



1. Equal access to health and social care services.
2. Independence and quality of life for people who use services.
3. Choice of services to allow people to live how they want and where they want.
4. No discrimination
5. Being included in decisions.
6. Carers should be offered support.
7. The user of the service should come first.

8. People who find it hard to make decisions should be protected.

9. Services should be as specialist as people need them to be.

10. People should be told about choices of financial benefits like Direct Payments and different funds.

11. There should be a special law around people with long term conditions.

12. People should have high quality information at all stages of using services.



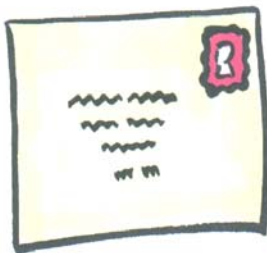
Please use the space below to suggest anything else that is important to you....

THANK YOU

FOR TAKING TIME TO COMPLETE
THIS QUESTIONNAIRE.



We would like you to return it to:

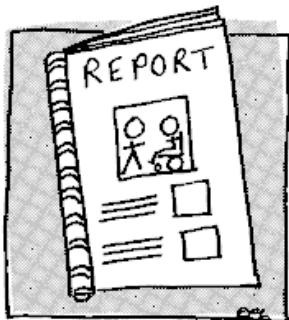


**Kate Hardy,
Unit 212 16 Baldwins Gardens
London EC1N 7RJ**

**Tel: 020 7813 3645
Fax: 020 7813 3640**



**E-mail:
katehardy@lmca.org.uk**



**PLEASE RETURN BY OCTOBER
1ST 2003**

**For the full version of the
Questionnaire please [click here](#).**