

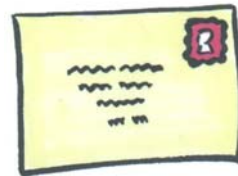
Long-term Medical Conditions Alliance
Unit 212, 16, Baldwins Gardens
London
EC1N 7RJ
Tel: 020 7813 3637
PO Box 36731
London
SW9 6WY

14th August 2003

Dear Colleague

New National Service Framework for Long-term Health Conditions

Why we are writing to you



We are writing to you because we think that you may want to have a say in the Government's new National Service Framework for Long-term Health Conditions.

The Long-term Medical Conditions Alliance and the Neurological Alliance are working together to make sure that the National Service Framework (NSF) for Long-term Conditions takes account of the needs and wishes of service users.

If you want to know more about the background and how the NSF is doing there is a more detailed note attached to this letter.



We want to get your views.

What work has already been done

Some things have already come up as being important.

- the need for people to see an expert and to be able to have services when they need them.
- the need to make sure that service users have a say in decisions and choices about their care
- help people to keep their independence
- giving information at all stages
- having services locally to help people do things
- life-long care and support, for carers as well.
- equality of access for all groups

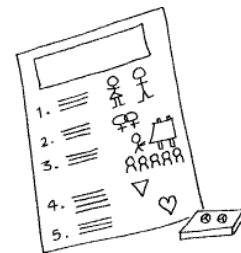




These are difficult things to do. We need to make sure we get things right. People should have specialist care when they need it yet have access to the care everyone else has too.

What you can do:

You will find a questionnaire with this letter. This questionnaire is just one way of asking questions.



We would like you to fill it in and return it to Kate Hardy who is based at the London office of LMCA.

Questionnaires should be sent to:
Kate Hardy,
Unit 212 16 Baldwins Gardens
London EC1N 7RJ

Tel: 020 7813 3645
Fax: 020 7813 3640

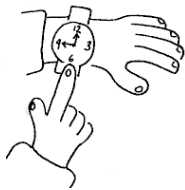
E-mail: katehardy@lmca.org.uk

Filling in the questionnaire:

You just need to give each statement a score so we know what is most important to you.



These statements are standards that the group has already come up with.



Why is there not much time?

Time is running out, but we have only just been given the money for this consultation.

More copies

If you want to give questionnaires to other people you know please fill in the part of the questionnaire about this, or photocopy one for them.



Please check with the people you are asking us to send one to that they are happy for their details to be sent to us.

Please complete your questionnaire and return by 1 October 2003.

Consultation events

You may want to take part in one of the NSF consultation events which are being organised.



Details of these events will be on these web sites at:

www.lmca.org.uk

www.neurologicalalliance.org.uk

You can also find out about the events by ringing **020 7813 3645**.



Help with the questionnaire

If you want to send in your own view or need support or would like to send your views in a different way, you can ring **020 7813 3645** for help and information.





What happens next

The Long-term Medical Conditions Alliance and the Neurological Alliance will put all the information together and make a report which will be given to the Department of Health to help them work out the National Service Framework standards.

There will also be chances later on to give your views.

We will keep you up to date with news through e mails, the web site and letters.



We value all of your comments.

Yours Sincerely
David Pink
Chief Executive
Long-term Medical Conditions Alliance