



Kingarth, Radcliffe, Greater Manchester

“For some individuals with learning disabilities who are ready to leave formal care settings, a move straight into a Supported Living environment is a step too far too soon.”

Kingarth offers a unique service specification; designed by experienced care professionals in consultation with service users, the scheme offers seven specialist short or long term placements for male adults with learning disabilities with complex needs who may also have found themselves, or are at risk of finding themselves, in conflict with the criminal justice system. The service is also currently working to develop an outreach capability

offering specialist support to individuals within their own homes.

Located in Greater Manchester, Kingarth is a regional specialist forensic resource offering adults with learning disabilities who are on the offender pathway a unique model of support. If you or your colleagues are working with someone who is a delayed discharge or who is in need of a robust package of care in the community, then please contact us.

Conceived by a team of practitioners with many years' experience in the field and inspired by the conclusions of the Bradley Report, Kingarth is the UK's first community based Residential Forensic Step Up/Step Down service to operate under the CQC's 'Registered with Nursing' category.

Innovation

“A new approach to dealing with learning disabled offenders could prevent this vulnerable group being caught in the revolving door of the criminal justice system.”

Supporting Residents

A key feature that sets Kingarth apart from other options is the service benefits from a high ratio of trained staff, including at least one Learning Disability Nurse on the rota at all times. By recruiting people with excellent self-awareness, great patience and highly developed, flexible communication skills, we have ensured that sensitive human interaction is the core skill of our staff team.

People with learning disabilities may also have a wide range of physical and mental health conditions. Our Learning Disability Nurses and Support Workers work in partnership with individuals to provide specialist healthcare and support. Their main aim is to support the well-being and social inclusion of people with a learning disability by improving or maintaining their physical and mental health; by reducing barriers; and supporting the person to pursue a fulfilling life, including addressing and helping them manage offending behaviours.

Once individuals embark on the ‘offender pathway’, their journey through services becomes highly complicated, very expensive and more often than not, very long-term. By using professionally qualified specialist staff that are skilled at addressing problem behaviours, Kingarth aims to deliver better outcomes for people, including reducing the risk of admission or readmission to secure services. The scheme will focus heavily on prevention and act as a ‘least restrictive’ alternative for individuals being considered for detention in a hospital setting.

Supporting Staff

Kingarth operates in partnership with Consensus, the learning disability division of Caring Homes Group, one of the UK’s leading independent sector care providers. Consensus currently supports over five hundred people with learning disabilities in over eighty services around the UK. In terms of Quality Assurance, this close relationship provides Kingarth with access to a large and established care delivery framework within an experienced and established infrastructure.

As part of the partnership arrangement, Kingarth benefits from the input of the Positive Behaviour Intervention Team (PBIT); a team of Tizard Centre trained Behavioural Practitioners which supports services across the Group by providing intensive support for individual cases. The team also delivers training and support for service staff in a range of behavioural intervention techniques.

The PBIT uses Positive Behaviour Support (PBS) and Applied Behaviour Analysis (ABA) to provide a holistic and person centred approach that seeks to find the cause and function of behaviour that challenges services. They work in partnership with support



staff to design a range of interventions, including proactive and reactive responses, teaching skills and lifestyle changes.

In addition to mandatory training, staff at Kingarth benefit from a comprehensive and bespoke Forensic Learning Disability training program, which equips them with the skills and values necessary to work in this specialist field.

Post incident analysis sometimes demonstrates that when a service user in the community with an offending history suffers a placement breakdown, prompting what Lord Bradley described as the 'revolving door' phenomena, the root cause can all too often be traced back to a failure within the staff team. The consequences of placement breakdown for those already on the 'offender pathway' are particularly severe and often catastrophic for everyone involved, especially the service user. Incorporated into the Kingarth model is a recognition of this significant risk; steps to mitigate it include the provision of a highly trained staff team that is Learning Disability Nurse led, and structurally flexible enough to respond quickly to a developing crisis.

The Environment

Who better to help draw up plans for a forensic service than someone who spent many years in hospital and residential care settings, then gone on to study design?

Following the close involvement at the design stage of a service user Design Consultant, Kingarth boasts a range of features informed by service user comment and experience which greatly enhance the quality of life of those living there.

All seven residents are offered spacious and pleasantly furnished en-suite bedrooms, each of which exceeds CQC minimum standards. To enhance comfort and to conform to ordinary life principles, all beds provided are double. Each en-suite is a spacious wet room with a bath and shower.

When people first visit Kingarth, they are struck by the quality of the build and the amount of light and space there is. Individuals within the service can choose to eat in the main dining room or in the kitchen diner, for relaxation there is the choice of retreating to one of the two large lounges or relaxing in the conservatory. Residents can choose to sit outside enjoying the privacy of the enclosed back garden or make use of the therapeutic outdoor spa bath.

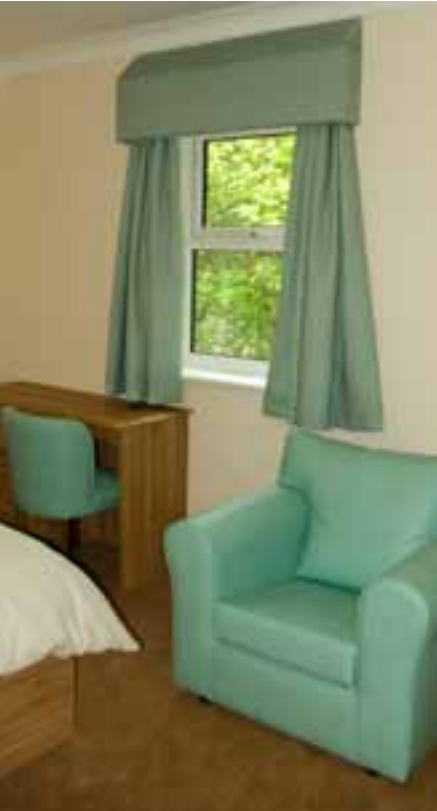
At Kingarth, we are committed to offering placements to individuals with a range of different risk indicators. Environmental risk mitigation features built in include a sprinkler system, each of the bathrooms and en-suites has deliberate flood mitigation measures, doors are anti-barricade, bedroom furniture handles are flush fitting and each bedroom has a facility for the electric sockets to be externally isolated. The specification is extremely high, however the feel of the building remains very homely, demonstrating the degree of thought and care that has gone into the design.





“My life has changed so much for the better. I love being able to try new things and meet new people.”

Simon



Kingarth, 17 New Road, Radcliffe
Greater Manchester M26 1LS
www.kingarth.com • enquiries@kingarth.com



Kingarth is a truly innovative project.
To make an enquiry or a referral, or if you require more information, please contact Ray Godwin on
07825 041 843
or alternatively contact the service directly on:
0161 725 8008




KINGARTH
LTD

In partnership with

consensus ●●●
OPPORTUNITY. CHOICE. SUCCESS.