


Rinse off the soap with  
water and dry your  
hands



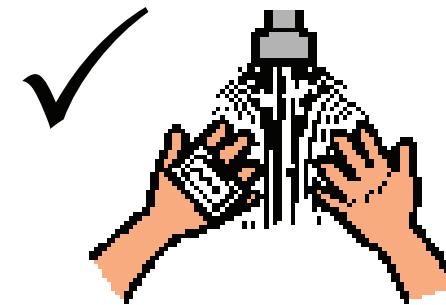
Put plasters on cuts

  
**Adult Learning Disability  
Division (Health)  
Mytton Oak,  
Royal Shrewsbury Hospital North,  
Shrewsbury,  
Shropshire,  
SY3 8XQ**



**Tel: 01743 261181**  
**ALDD/081 Review April 08**

**Keeping your hands  
clean**

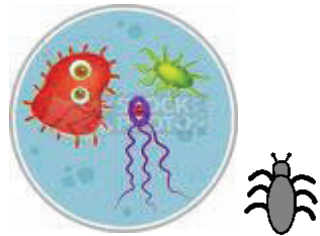


Hand washing is important  
Because....  
We use our hands for  
different activities





Hands get dirty e.g. after going to the toilet



Dirty hands can spread infections

We should wash our hands .....



After using the Toilet



Before cooking and eating food



After touching pets



When our hands look or feel dirty

How to wash your hands



Wet hands before putting on soap



Wash all parts of your hands, especially the fingertips