



New Pathways counselling service will use what the researchers find out to make sure people with learning disabilities can use their service.



The researchers will tell other people with learning disabilities, counsellors, staff and the police what they find out. They want to make life safer for people with learning disabilities.



If you want to know more you can phone Joyce Howarth:
01443 483881



Or email:
jhowarth@glam.ac.uk



Or write to:
Looking into Abuse
HESAS
University of Glamorgan
Glyntaf Campus
Pontypridd CF37 1DL

Looking into Abuse: research by people with learning disabilities



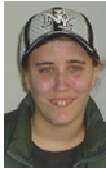
The researchers are:



Davey
Bennett



Lee
Edwards



Samantha
Flood



Joyce
Howarth



We are finding out :

- What people with learning disabilities understand by abuse
- What their views are of abuse
- What help and support they need to keep safe
- What are the best ways to help when someone has been abused.

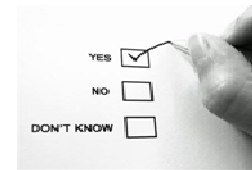


2010



2013

The project started in April 2010 and will end in March 2013



We will send out questionnaires to People First groups in Wales.



In November 2011 there will be a residential workshop on abuse. The researchers will talk to people to find out what they think.



The researchers are also working on an easy read Literature Review. This looks at what others have said or written about the 4 questions.