



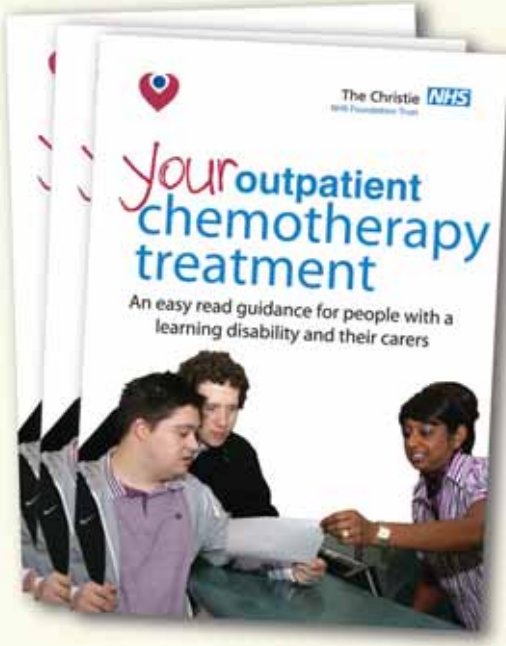
The Christie **NHS**
NHS Foundation Trust

Your outpatient chemotherapy treatment

An easy read guidance for people with a
learning disability and their carers



Introduction



We hope you will find this **booklet** about **chemotherapy** **useful**.



Ask your **doctor** or **nurse** if you have any **questions**.



You have been to
see your doctor.
You had some
tests. Your tests
show you have
cancer.



You are coming to
The Christie.
This is a hospital
that treats people
with cancer.



The doctors and nurses here know a lot about cancer.



People with cancer come here for special medicine.

The special medicine is called chemotherapy.



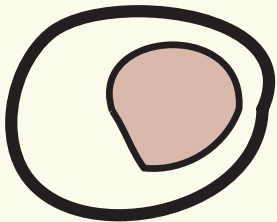
What is chemotherapy?



Chemotherapy uses different medicines to treat cancer.



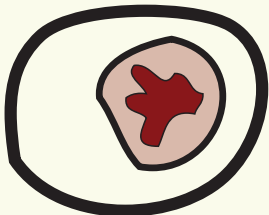
What does chemotherapy do?



Good cells



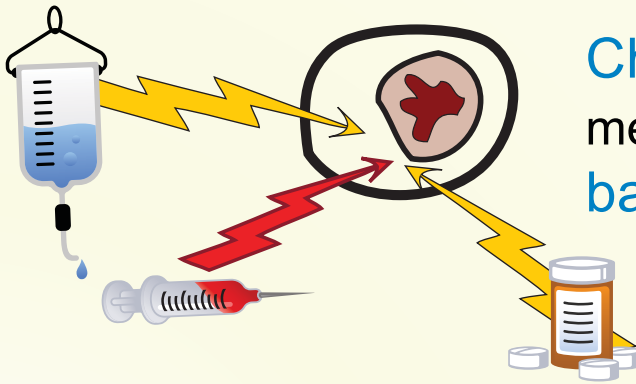
Your **body** has **good cells**.



Bad cells



Some of your **cells** are **bad**. They have **cancer**. These **cells** make you **ill**.



Chemotherapy medicines fight the bad cells.



How often is chemotherapy given?



Your nurse or doctor will explain to you.



Saying *yes* to treatment



Your **nurse** or **doctor** will **explain** the **treatment**.



You will have to **sign** a **form**.

You will **get help** with this.

How is chemotherapy given?



There are different ways. Your doctor will explain to you.

Chemotherapy can be:



Tablets



Liquid



Injection



You will go to The Christie to have chemotherapy.

How is chemotherapy given?



The nurse will put a small needle into the back of your hand.



The needle is joined to a tube.



A bag is joined to the tube. The bag has chemotherapy medicine in it.



Central line

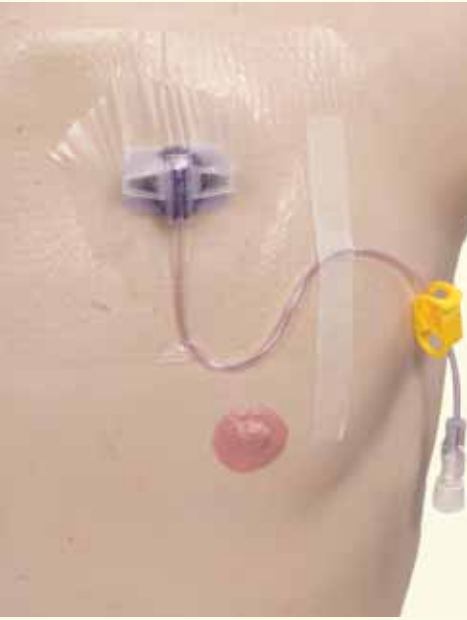
A thin tube put in your chest.

This may stay in for a long time.



Infusion pump

This is joined to the central line by a tube and pushes medicine into the body. This may go home with you.



Portacath

A small round device put under the skin on the chest.

This puts liquid medicine into your body.



P.I.C.C.

This is a small tube that goes in your arm.

This will stay in for a long time.

When can I go home?



The nurse will tell you when you can go home.



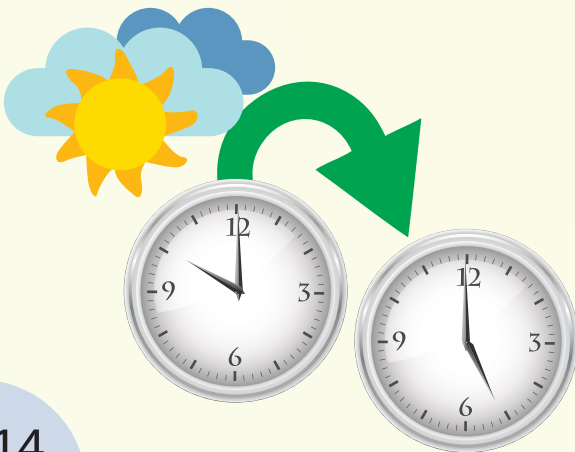
Where will I have my treatment



You will come to the **Oak Road Patient Treatment Centre** entrance.



Bring a **friend** or **carer**.



You will be there **all day**.



You need to book in. Show the receptionist your letter.



If you are worried about needles tell the receptionist.



Give the receptionist your mobile telephone number.



The receptionist will give you a ticket. It will have a number on it.



A therapist will help you if you are worried about needles.



Go to the
waiting room.



Your number will
be called out.

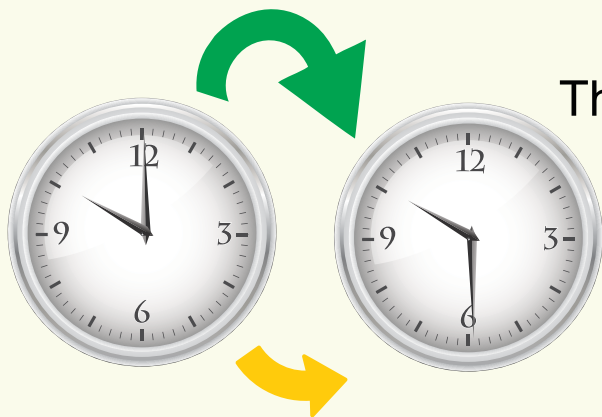


You will have **blood** taken from your **arm**.



The **blood** goes to be **tested**.

This is to **check** you can have **treatment**.



This **takes time**.



You can go for a drink or a snack.



You can go for a walk.



The receptionist will ring you when you need to come back.



You will see the doctor or nurse.

Your blood will be good or bad.



Bad blood means you will have to go home. You can come back another day.



Good blood means you will have chemotherapy.



Go upstairs to the ward.

Book in at reception.



The nurse will take you to the waiting area.



The **nurse** will **put** a **needle** in your **arm**.



The **nurse** will **join** a **tube** to the **needle**.



The **nurse** will **join** a **medicine bag** to the **tube**.



You sit in a **chair**.
The **medicine**
goes into your
body.



When the
medicine is **gone**
the **needle** is
taken out of your
arm.



When
chemotherapy has
finished you get
an appointment
card.



The card tells you
when to come
back.



You get tablets
to take home.

Things to bring with you



Magazines and books for you to read whilst you wait.



Personal Music Player

An mp3 player or iPod to listen to music or watch films whilst you wait.

Word List

Chemotherapy: Treatment that kills cancer cells.

Cancer: Something bad that grows and spreads in your body.

Cells: Small parts that make up your body.

Treatment: Using medicine to try to make you better.

Central Line: A tube that goes into your chest to let liquid medicine into your body to help you.

P.I.C.C. peripherally inserted central catheter: A long tube that goes into your arm and body to let liquid medicine help you.

Portacath: Put under your skin with a tube that goes into your vein for liquid medicine.

Infusion pump: A machine that helps the liquid medicine go into your body.



your Notes



Acknowledgement

A joint working partnership between:

The Christie NHS Foundation Trust

Manchester Learning Disability Partnership (MLDP)

Central Manchester University Hospital NHS Foundation Trust

The Christie NHS Foundation Trust,
Wilmslow Road, Manchester,
M20 4BX

T. 0161 446 3000

F. 0161 446 3977

Email: Enquiries@christie.nhs.uk

Web: www.christie.nhs.uk