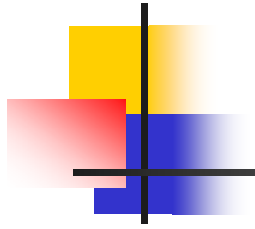


A decorative graphic on the left side of the slide, featuring a vertical black line and a horizontal black line intersecting. To the left of the intersection are three overlapping squares: a yellow one on top, a red one on the left, and a blue one on the bottom. The squares have a soft, blurred gradient effect.

Learning Disability Mortality Review Process

Liz Jennings
Learning Disability Liaison Nurse
Royal Devon and Exeter
Hospital



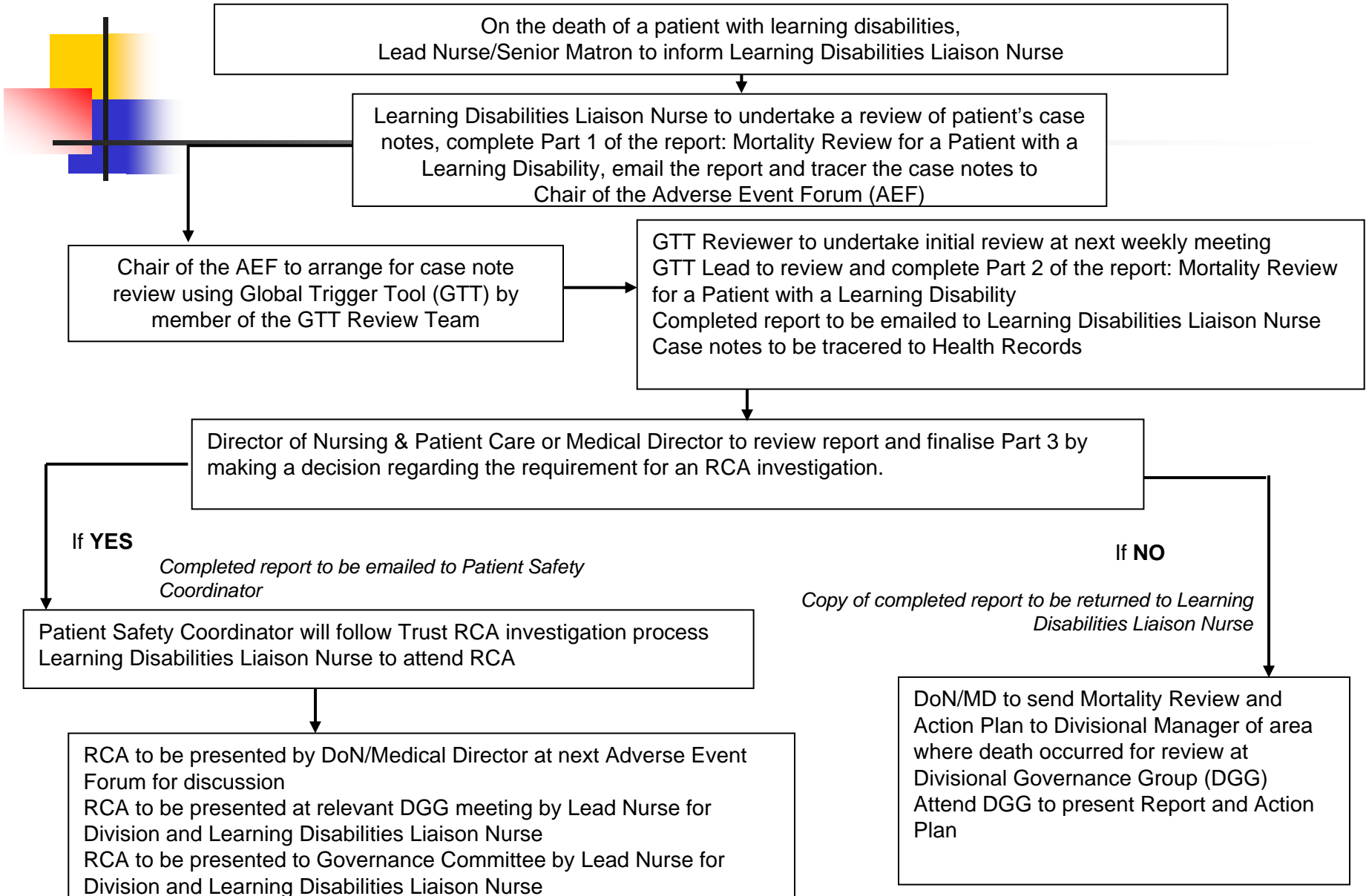
'Healthcare For all'

An Independent Inquiry into Access to Healthcare
for people with Learning Disabilities.
Sir Jonathon Michael 2008.

Recommendation 5

'To raise awareness in the health service of the risk of Premature Avoidable death, and to promote sustainable practice in Local assessment, management and evaluation of services, the Department of Health should establish a learning disabilities Public Health Observatory. This should be supplemented by a time limited Confidential Inquiry into premature deaths in people with learning disability to provide evidence for clinical and professional staff of the extent of the problem and guidance on prevention.'

Mortality Review for a Patient with Learning Disabilities PROCESS FLOWCHART





Translation of medical jargon

Global Trigger Tool (GTT) – The use of ‘triggers’ or clues to identify adverse events

Adverse Events Forum (AEF)-

Root Cause Analysis (RCA) – A well recognised way of offering a Framework for reviewing patient safety incidents.



Next Steps

- ❖ Agree sharing of information with partner organisations
- ❖ Review Learning Disability Mortality process
- ❖ Embed the use of specific requirement assessment and flagging of medical notes and bed signage. Monitor and audit
- ❖ Continue Learning Disability Awareness Training across the Trust